



**Energy Efficient  
General-Purpose  
Single-Phase  
Motors 1 HP to 3 HP**



ITEM		STANDARD SPECIFICATION
O T H E R S	Painting	True coat-Jet Black - 336
	Name Plate Sticker	Affixed on the Motor Casing
	Bolt Thread	ISO Metric System.
	Grounding Terminal	Provided in the Terminal Housing
	Typical Performance	Attached
	Temperature Rise	Not to Exceed 80°C by Resistance Method.
	Manual Resettable Overload Switch	Provided Only in TS 1004 (2HP) & TS 1005 (3HP)

PERFORMANCE DATA							
S.No.	PARAMETERS		MODEL NO.				
			TS 1001	TS 1002	TS 1003	TS 1004	TS 1005
1	OUTPUT kW / HP		0.37 / 0.5	0.75/1.0	0.75 / 1.0	1.5 / 2.0	2.2 / 3.0
2	POLES		4	4	4	4	4
3	FRAME SIZE		B56	B56	B56	100S	100S
4	ENCLOSURE		DP	DP	DPFC	TEFC	TEFC
5	FULL LOAD	TORQUE kg-m	0.251	0.502	0.502	0.995	1.492
		EFFICIENCY (%)	60	68	68	71	72
		POWER FACTOR	0.8	0.9	0.9	0.94	0.92
		CURRENT (A)	3	5.5	5.5	9.5	13.5
		RPM	1425	1425	1425	1440	1440
6	LOCKED ROTOR	TORQUE (%)	250	250	250	250	250
		CURRENT(A)	28	48	48	88	116
7	CAPACITOR START	μf	120	150	150	200	280
		VAC	275	275	275	275	275
8	CAPACITOR RUN	μf	12.5	20	20	20	30
		VAC	440	440	440	440	440

## Outline Dimension for DP & DPFC Series

FIG. 1 – Model – TS 1001, TS 1002 – Drip Proof (DP)

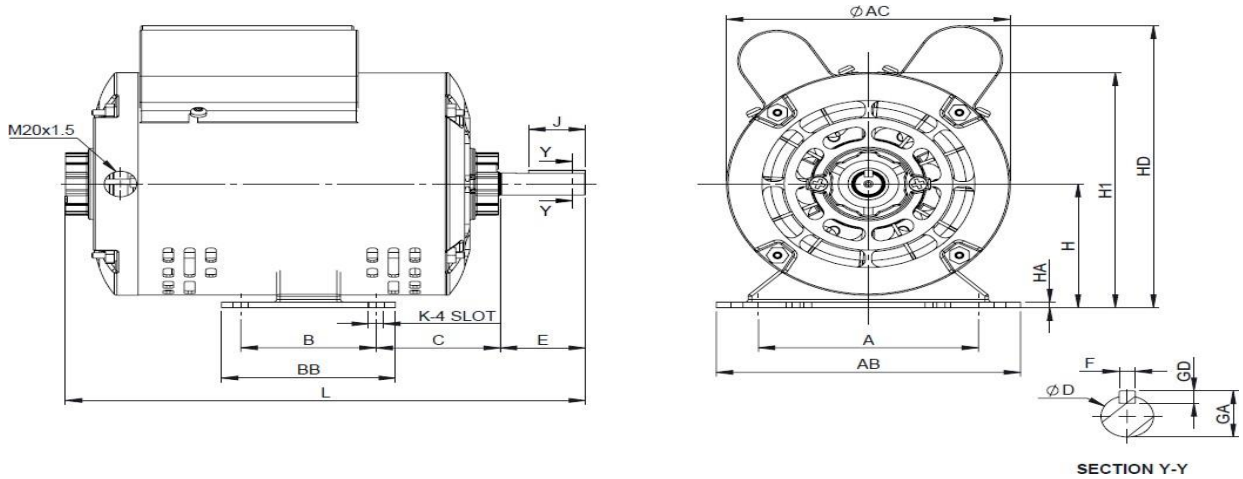
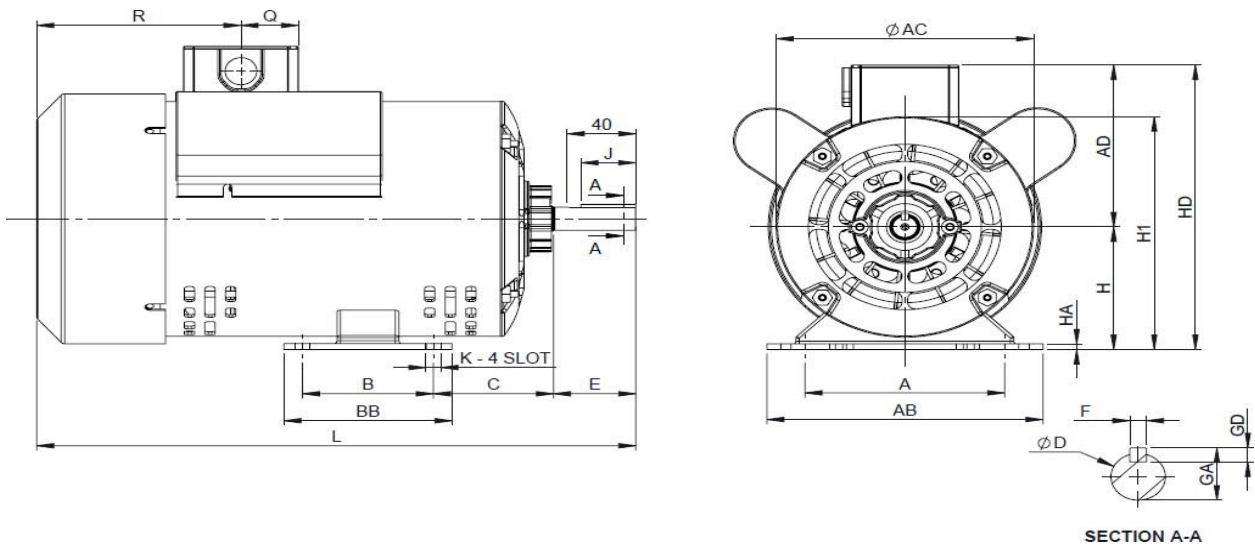
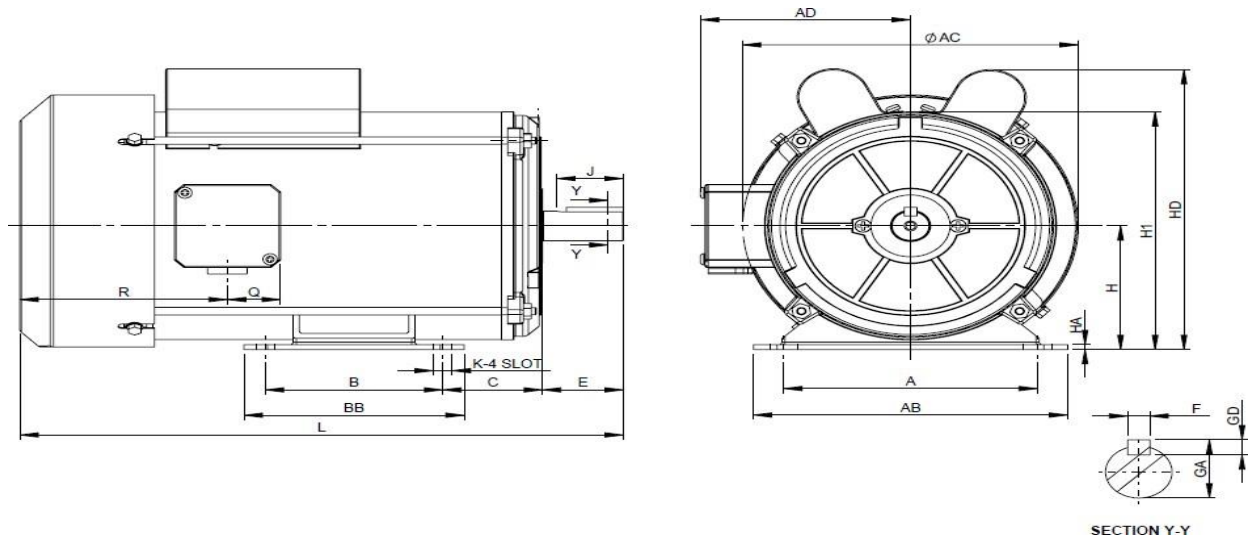


FIG. 2 – Model – TS 1003 – Drip Proof Fan Cooled (DPFC)



## Outline Dimension for TEFC Series

FIG. 3 – TS 1004, TS1005 – Totally Enclosed Fan Cooled (TEFC)



kW / HP	FRAME SIZE	FIG. NO.	A	B	C	H	H1	HD	K	L	HA	ØAC	AD	Q	R
			4P	1	2	3	4	5	6	7	8	9	10	11	12
0.37 / 0.50	B56	1	124	76.2 0	70	88.90	169	200	8.64	283	4	160	---	---	---
0.75 / 1.0	B56		293	---	---	---	---	---	---	---	---	---	---	---	---
0.75 / 1.0	B56	2	124	76.2 0	70	88.90	169	210	8.64	353	4	170	---	---	---
1.50 / 2.0	100S	3	160	112	63	100	193	228	12	353	4	212	134	34	127
2.20 / 3.0	100S		383	34	132	---	---	---	---	---	---	---	---	---	---
Output kW	FRAME SIZE	SHAFT EXTENSION						BEARINGG		Packing	Dimensions (mm)			NET WEIGHT (KGS)	GROSS WEIGHT (KGS)
4P		D	E	J	F	GA	GD	DE END	NDE END	L	B	W			
0.37 / 0.50	B56	15.870	48	40	4.81	17.935	4.81	6203 2RS	6203 2RS	325	295	225	10.30	10.70	
0.75 / 1.0	B56							6203 ZZ	6203 ZZ	325	295	225	12.20	12.40	
0.75 / 1.0	B56	15.870	48	40	4.81	17.935	4.81	6203 ZZ	6203 ZZ	410	300	275	14.40	14.80	
1.50 / 2.0	100S	24	51	42	8	27	7	6205 ZZ	6203 2RS	410	330	300	26.60	26.80	
2.20 / 3.0	100S							6205 ZZ	6203 ZZ	440	330	300	28.40	28.50	



#### HEAD OFFICE ADDRESS

TEMICO International, 47 Tuas Avenue 9,  
Singapore 639190

#### REGISTERED OFFICE

TEMICO Motor India Private Limited Unit No. 1003, Level 10, Tower B,  
The Millenia Building, No. 1 & 2, Murphy Road, Ulsoor, Bangalore, Karnataka – 560008.  
T: +91 80 2836 6454  
E Mail: [sales@temico.co.in](mailto:sales@temico.co.in)

#### FACTORY ADDRESS

TEMICO Motor India Private Limited  
Plot No. 23, Bengaluru Hi Tech Defence and Aerospace Park IT Sector, Jala Hobli, BandeKodigeHalli, Singahalli,  
Bangalore, Karnataka – 562 149